

Rechteckführung
(kompatibel zu Z07/Z17)

Square Guide
(Compatible with Z07/Z17)

S1214/ . . .

Teil ①

Mat.: 1.2162, **DLC-beschichtet**
Härte: 70 HRC, gehärtet und geschliffen

Part ①

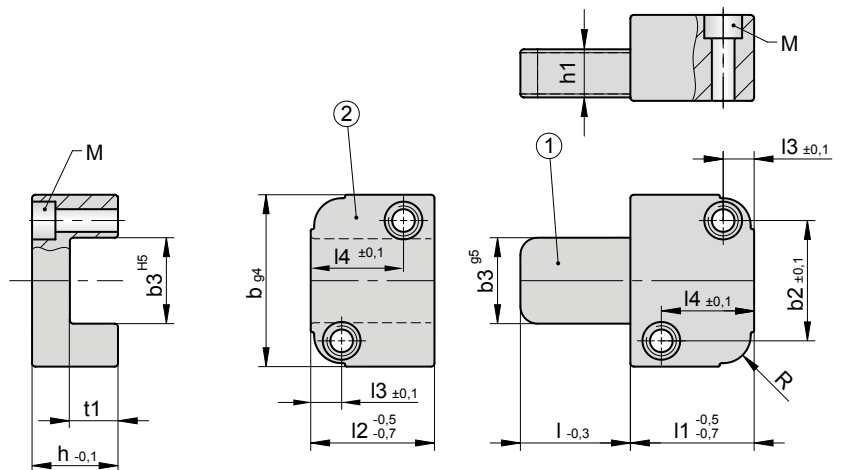
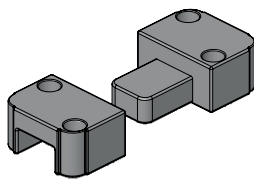
Mat.: 1.2162, **DLC-coated**
Hardness: 70 HRC, hardened and ground

Teil ②

Mat.: 1.2162
Härte: 60 HRC, gehärtet und geschliffen

Part ②

Mat.: 1.2162
Hardness: 60 HRC, hardened and ground



h1	t1	b	b2	h	l2	l3	l4	R	M	l1	b3	l	Best. Nr. / Order No.
11	12	40	26	20	22	7	15	6	M6	22	16	20	S1214/ 22x16x 20
												40	S1214/ 22x16x 40
13	14	45	31	22	27	7	19	6	M6	27	20	25	S1214/ 27x20x 25
												50	S1214/ 27x20x 50
												32	S1214/ 36x25x 32
14	15	50	35	25	36	9	27	8	M6	36	25	63	S1214/ 36x25x 63
												40	S1214/ 46x32x 40
19	20	63	45	32	46	11	35	8	M8	46	32	80	S1214/ 46x32x 80
												50	S1214/ 56x40x 50
22	23	85	60	36	56	15	40	10	M10	56	40	100	S1214/ 56x40x 100
												56	S1214/ 66x50x 56
24	25	100	74	40	66	18	48	10	M12	66	50	112	S1214/ 66x50x 112

Einbauhinweise:

Mounting instructions:

