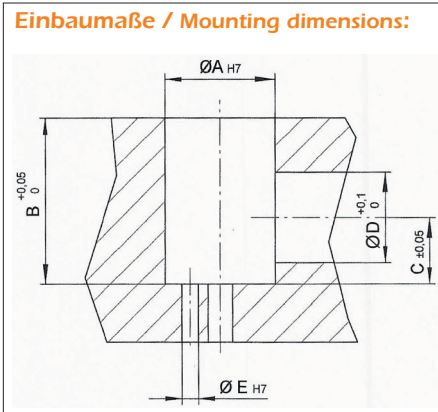
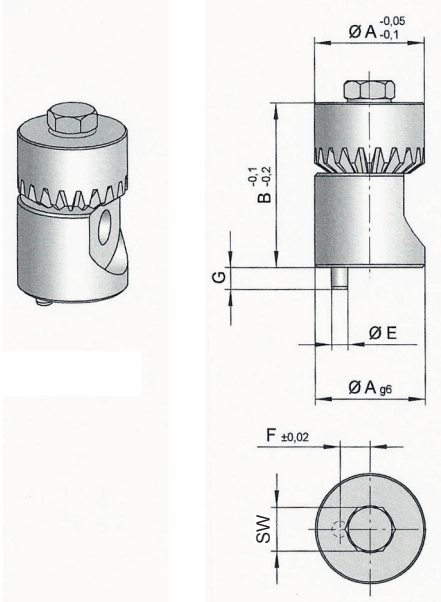


Antriebsersatz
ERMANNO BALZI
Drive Insert
S2410/ . . .

Mat.: 1.7225
 Härte: 800 N/mm² / 21,7 HRC
 Nitritiefe: 0,1 mm

Hardness: 800 N/mm² / 21,7 HRC
 Nitriding depth: 0,1 mm



| Schraube / Screw DIN 912 | A | B | C | D | E | F | G | SW | Best. Nr. / Order No. |
|-----------------------------|----|----|----|------|---|-----|---|----|-----------------------|
| M4 | 20 | 30 | 12 | 16,2 | 3 | 5,5 | 4 | 3 | S2410/ 3 |
| M5 | 20 | 30 | 12 | 16,2 | 3 | 5,5 | 4 | 4 | S2410/ 4 |
| M6 | 20 | 30 | 12 | 16,2 | 3 | 5,5 | 4 | 5 | S2410/ 5 |
| M8 | 20 | 30 | 12 | 16,2 | 3 | 5,5 | 4 | 6 | S2410/ 6 |
| M10 | 20 | 30 | 12 | 16,2 | 3 | 5,5 | 4 | 8 | S2410/ 8 |

Besondere Merkmale:

- Kleine Baumaße.
- Robustes System (mittleres Anzugmoment).
- Einfache Installation.
- Der Ein- und Ausbau von Formeinsätzen kann zeitsparend direkt in der Spritzgießmaschine erfolgen!

Special features:

- Compact dimensions.
- Sturdy system (medium tightening torque).
- Easy installation.
- Installation and removing of mold inserts can be done in a time-saving manner directly in the injection molding machine.