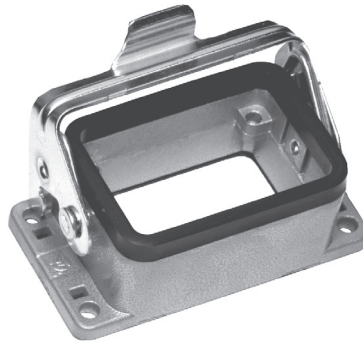




**Mehrpole Steckverbinder,
Gehäuseunterteil**

**Multi-pole Connector,
Socket Housing**

S5306/ . . .

- Alu-Druckguss-Gehäuse.
 - Mit Verriegelungsbügel.
 - Für 6, 10, 16, oder 24-polige Einsätze **S5310/ ÷**
 - 400 V / 16 A.
- Housing: Die-cast aluminium.
 - Including locking clip.
 - For 6, 10, 16, or 24-pole male inserts **S5310/ ÷**
 - 400 V / 16 A.



für / for S5310/ . . .	IP	T _{max.} [°C]			n Pole / Poles	Best. Nr. / Order No.
S5310/ 6	65	125	X	X	6	S5306/ 6
S5310/ 10	65	125	X	X	10	S5306/ 10
S5310/ 16	65	125	X	X	16	S5306/ 16
S5310/ 24	65	125	X	X	24	S5306/ 24