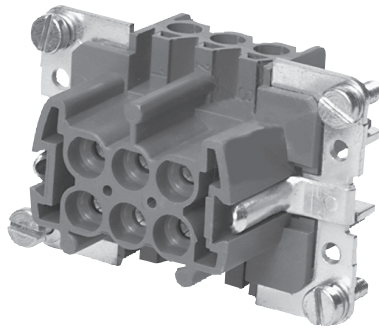




**Mehrpole Steckverbinder,
Buchseinsatz**

**Multi-pole Connector,
Female Insert**

S5311/ . . .

- Kunststoff-Isolierkörper.
 - Schraubanschluss, 2,5 mm².
 - 6, 10, 16, oder 24-polig.
 - 400 V / 16 A.
- Insert: Polyamide.
 - Threaded terminal end, 2.5 mm².
 - 6, 10, 16, or 24-pole.
 - 400 V / 16 A.



für / for S5305/ . . .	IP	T _{max.} [°C]			n Pole / Poles	Best. Nr. / Order No.
S5305/ 6	65	125	X	X	6	S5311/ 6
S5305/ 10	65	125	X	X	10	S5311/ 10
S5305/ 16	65	125	X	X	16	S5311/ 16
S5305/ 24	65	125	X	X	24	S5311/ 24