

**Führungssäule für Schiebereinheit,
2-fach-Führung (ERMANN BALZI)**

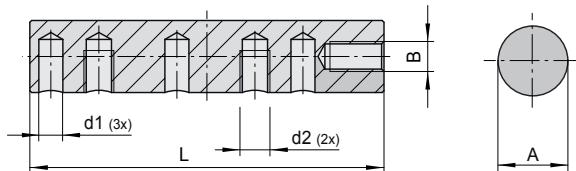
**Guide Pillar for Mold Slide Unit,
Double Guiding**

S6438/ . . .

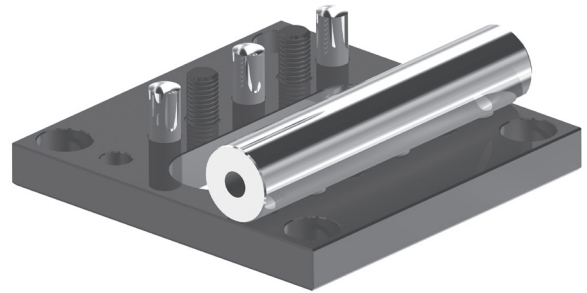
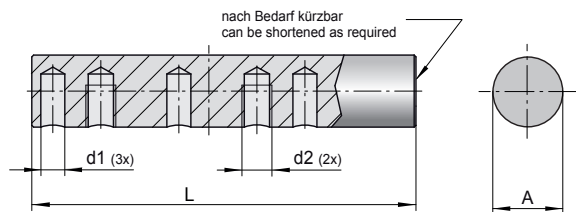
Mat./Härte: 1.7225 / 670 HV0.5
Nitritiefe: 0,3 mm

Mat./Hardness: 1.7225 / 670 HV0.5
Nitriding depth: 0,3 mm

Type A



Type B



d1	d2	B	Type	A	L	Best. Nr. / Order No.
4	M5	M5	A	12	60	S6438/A/ 12x 60
8	M8	M8	A	20	100	S6438/A/ 20x100
10	M10	M10	A	30	150	S6438/A/ 30x150
4	M5	fi	B	12	100	S6438/B/ 12x100
8	M8	fi	B	20	160	S6438/B/ 20x160
10	M10	fi	B	30	250	S6438/B/ 30x250